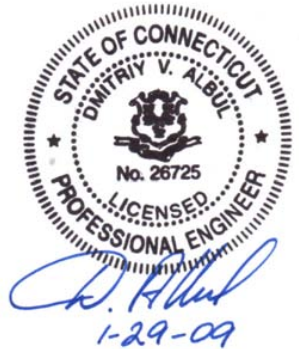




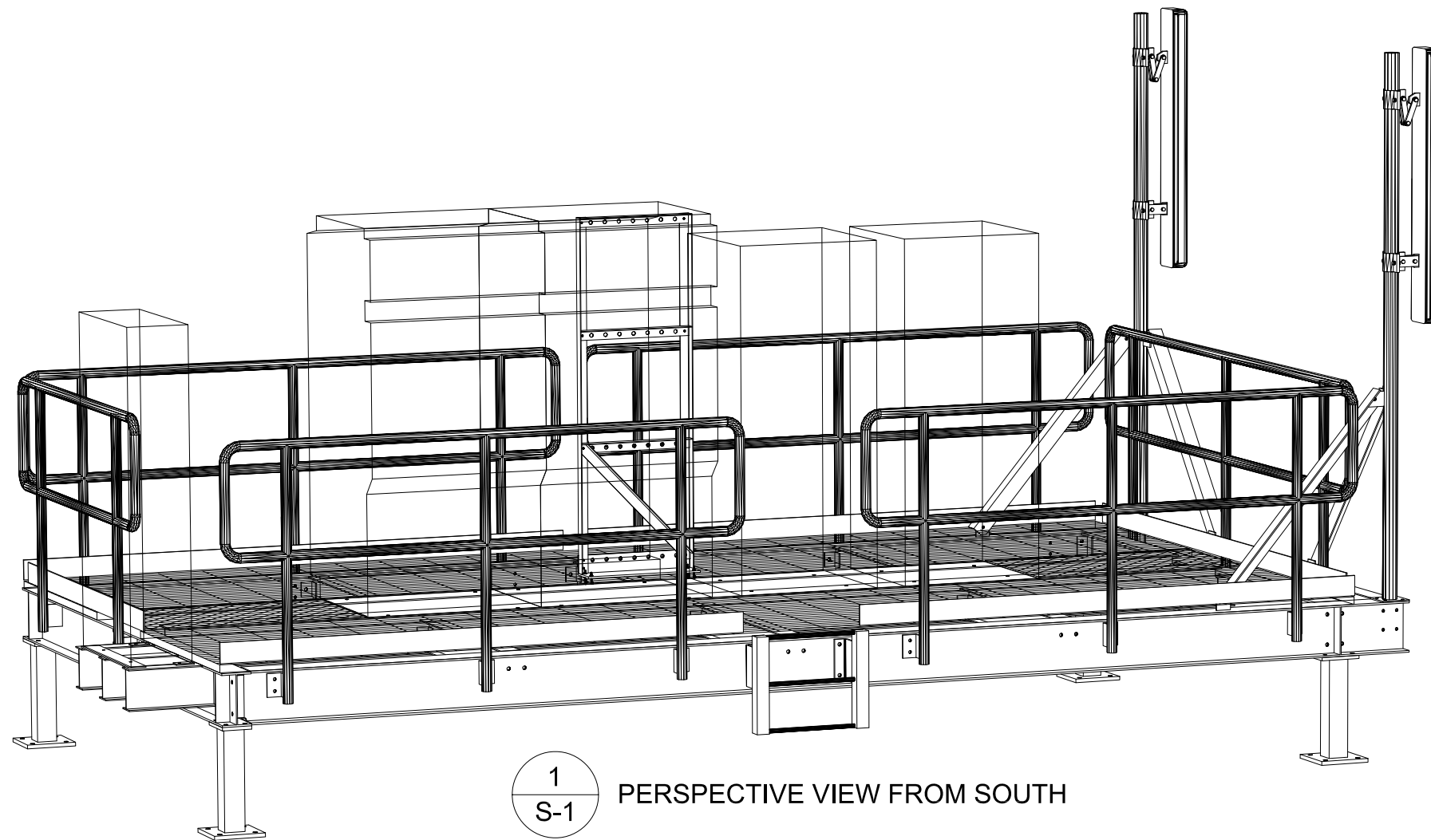
ENGINEER'S APPROVAL:



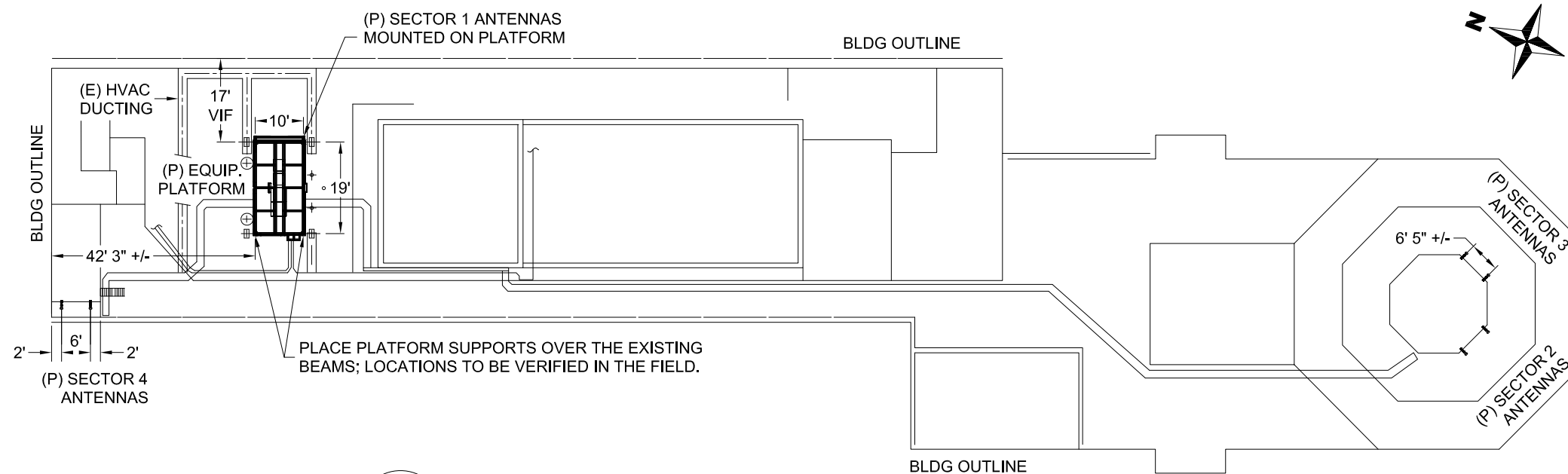
1 NORTH MAIN STREET
SUITE 312
CORTLAND, NY
PHONE: (607) 591-5381
FAX: (866) 870-0840

GENERAL NOTES:

1. ALL BEAMS SHALL BE ASTM A36, FY=36KSI.
2. ALL PIPES SHALL BE A53 GRADE B, OR BETTER.
3. ALL PARTS SHALL BE HOT-DIP GALVANIZED AFTER FABRICATION TO ASTM123.
4. ALL WELDS SHALL BE E70XX. ALL WELDING SHALL BE SEAL-WELDED FOR GALVANIZING PURPOSES.
5. MINIMUM FILLET WELD SIZE IS 3/16".
6. ALLOW FOR GALVANIZING DRAINAGE IN HANDRAILS AND STUB COLUMNS.
7. BAR GRATING SHALL BE W-19-4 (3/16"x1-1/2") STEEL.
8. ALL BOLTS SHALL BE GRADE A325 HOT-DIP GALVANIZED.
9. ALL BOLT HOLES SHALL BE 1/16" OVERSIZED UNLESS OTHERWISE SPECIFIED.
10. NO HOLES SHALL BE TORCH-CUT.
11. PROVIDE WASHERS FOR OVER-SIZED HOLES.
12. ROOFING AREAS EXPOSED FOR CONNECTION TO FRAMING SHALL BE REPAIRED.



1
S-1 PERSPECTIVE VIEW FROM SOUTH



2
S-1 PROPOSED LOCATION OF PLATFORM ON BUILDING ROOFTOP
SCALE 1":30'

NO.	DATE	ISSUE DESCRIPTION	BY/CHK
1	01/09/09	INITIAL RELEASE	JJ JT

SITE INFO
SITE NY6072
243 TRESSER BLVD.
STAMFORD, CT 06901

SHEET SCALE / UNITS
NTS ALL DIMENSIONS IN INCHES
UNLESS NOTED OTHERWISE

SHEET TITLE
LAYOUT ON BUILDING

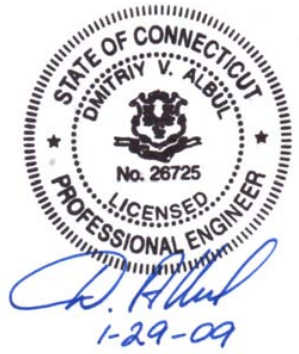
SHEET NUMBER
S-1

FILE NAME
08081

PREPARED FOR:



ENGINEER'S APPROVAL:



1 NORTH MAIN STREET
SUITE 312
CORTLAND, NY
PHONE: (607) 591-5381
FAX: (866) 870-0840

NO.	DATE	ISSUE DESCRIPTION	BY/CHK
1	01/09/09	INITIAL RELEASE	JJ/JT

SITE INFO

SITE NY6072
243 TRESSER BLVD.
STAMFORD, CT 06901

SHEET SCALE / UNITS

NTS ALL DIMENSIONS IN INCHES
UNLESS NOTED OTHERWISE

SHEET TITLE

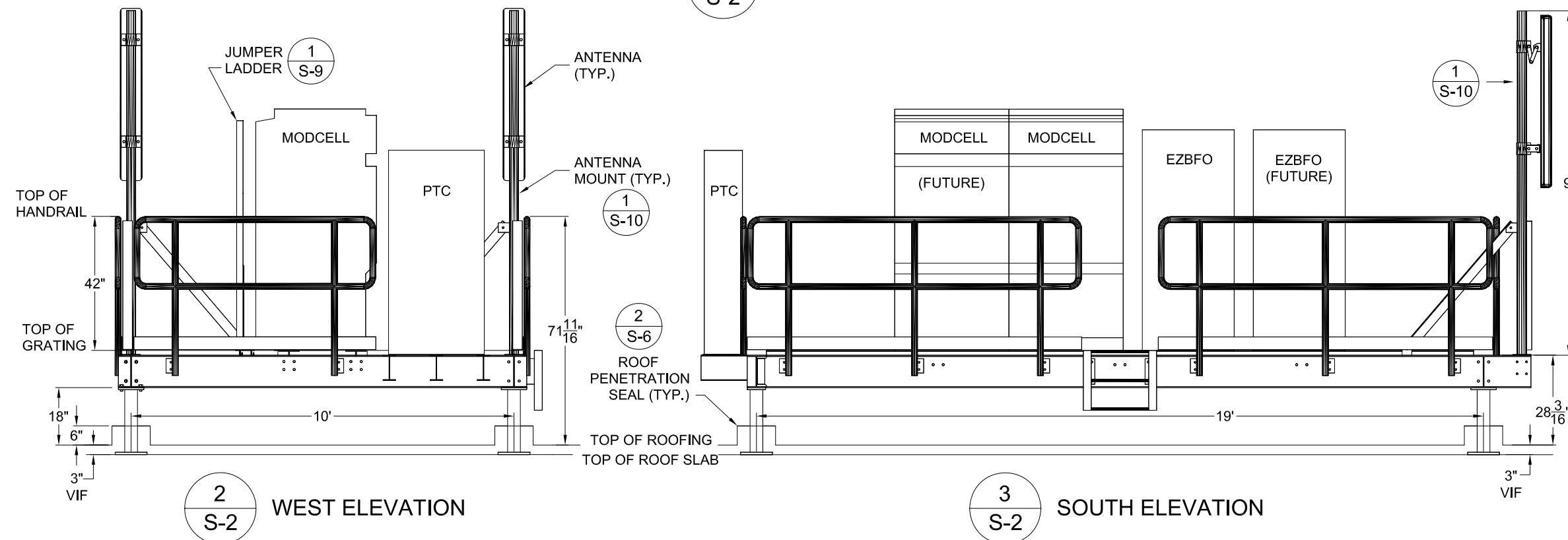
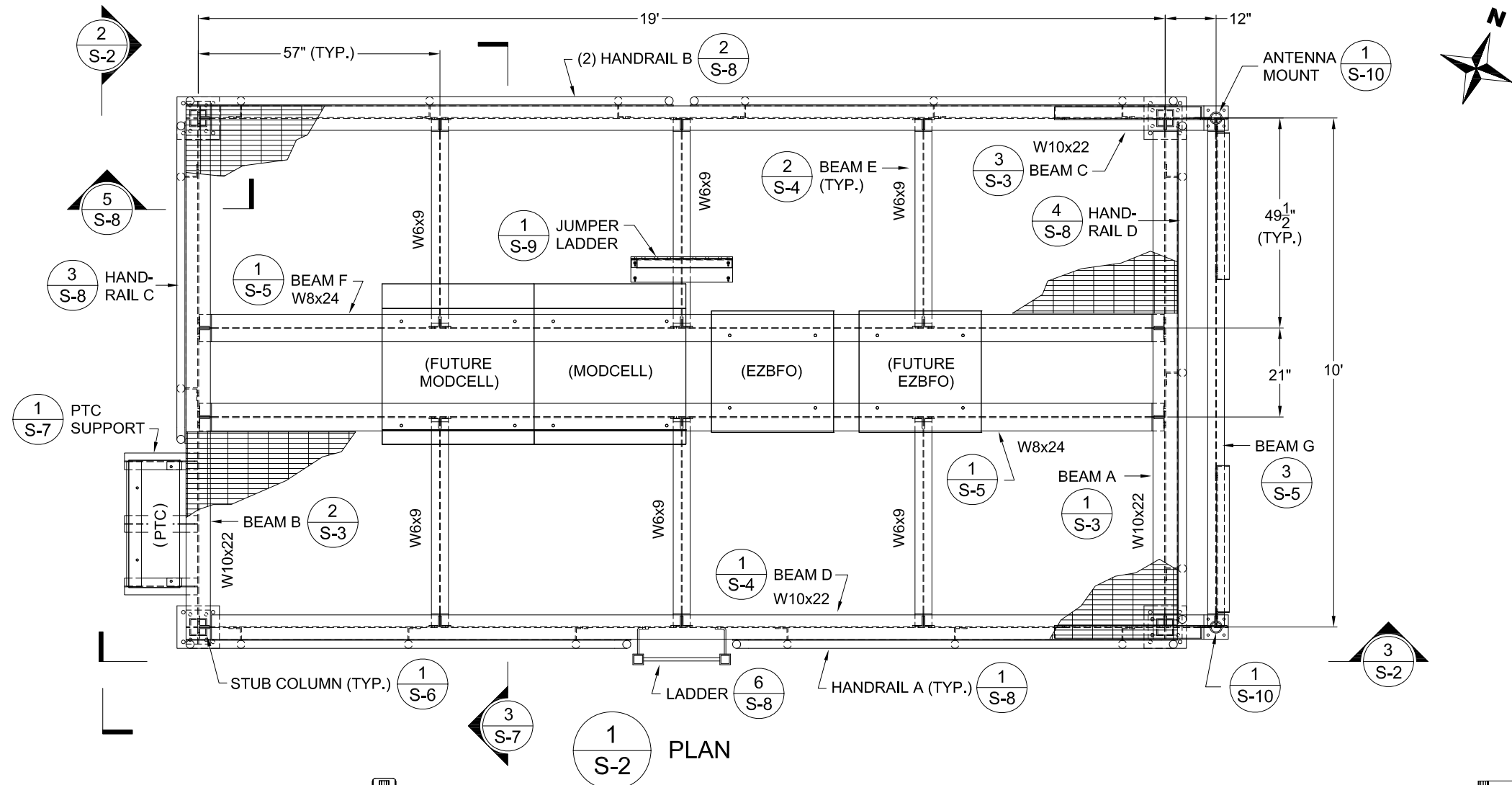
PLAN/ELEVATIONS

SHEET NUMBER

S-2

FILE NAME

08081

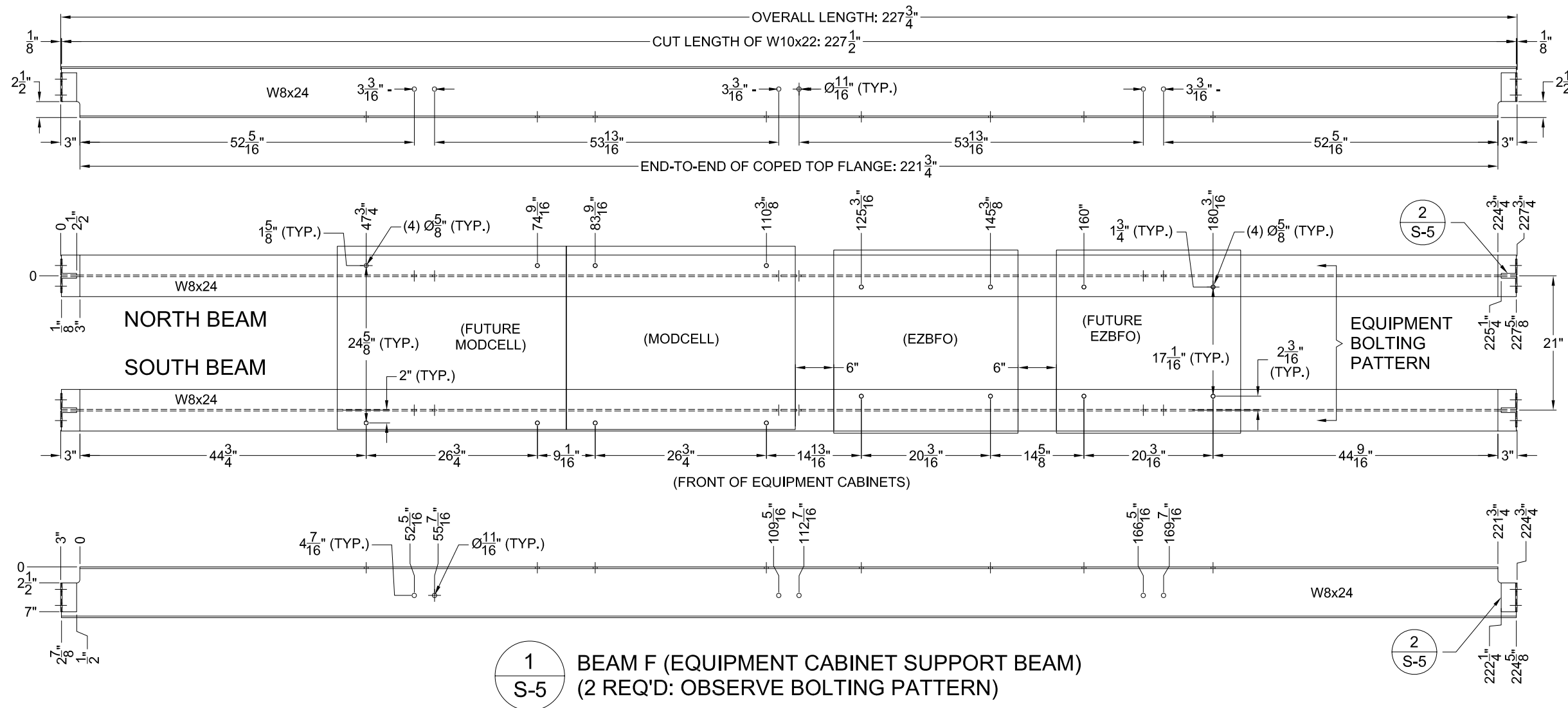




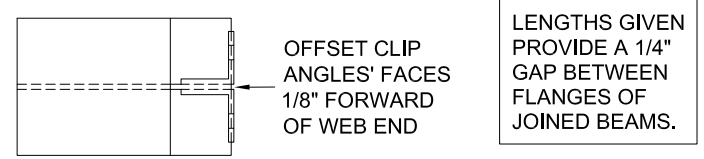
ENGINEER'S APPROVAL:



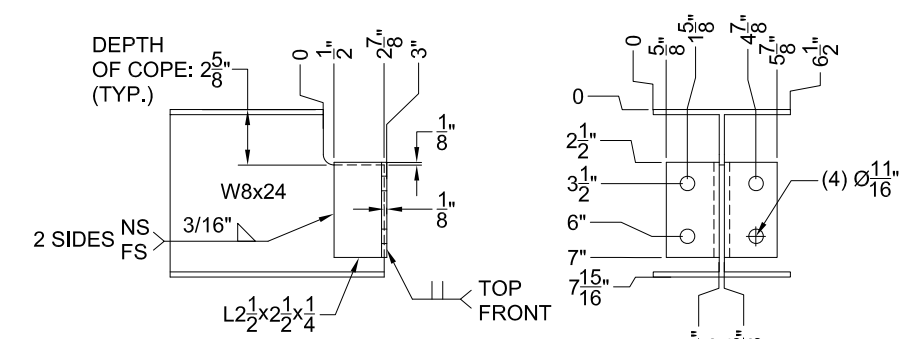
1 NORTH MAIN STREET
SUITE 312
CORTLAND, NY
PHONE: (607) 591-5381
FAX: (866) 870-0840



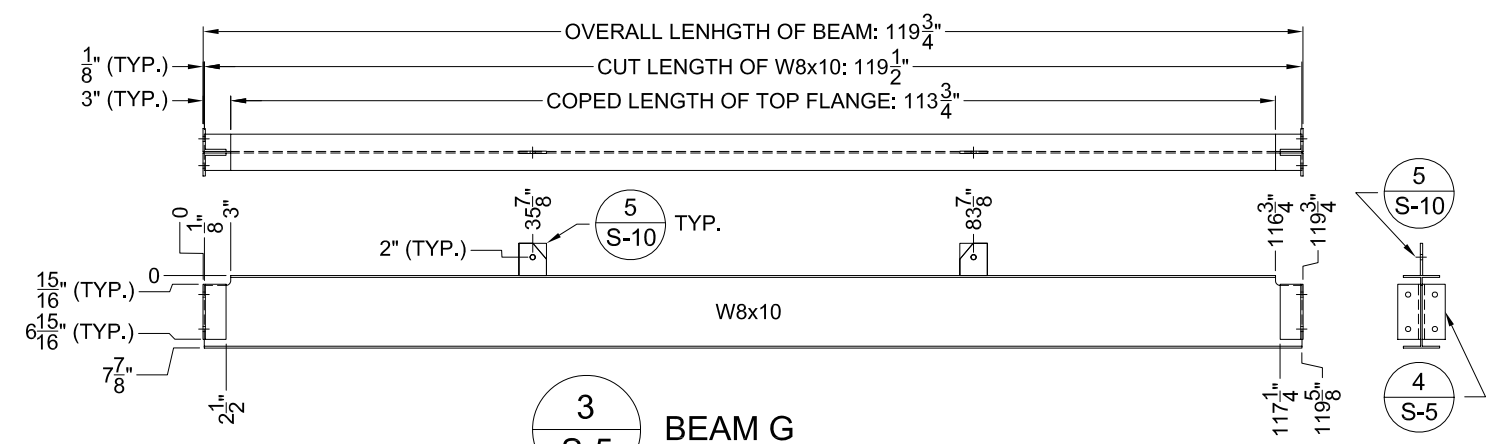
1 S-5 BEAM F (EQUIPMENT CABINET SUPPORT BEAM)
(2 REQ'D: OBSERVE BOLTING PATTERN)



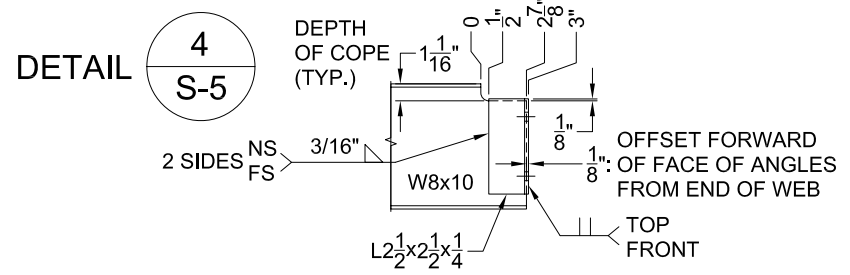
LENGTHS GIVEN PROVIDE A 1/4" GAP BETWEEN FLANGES OF JOINED BEAMS.



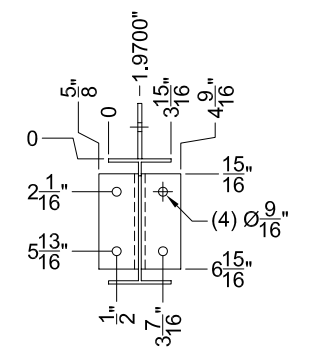
2 S-5 CLIP D (4 REQ'D)



3 S-5 BEAM G



4 S-5



5 S-10

NO.	DATE	ISSUE DESCRIPTION	BY/CHK
1	01/09/09	INITIAL RELEASE	JJ/JT

SITE INFO
SITE NY6072
243 TRESSER BLVD.
STAMFORD, CT 06901

SHEET SCALE / UNITS
NTS ALL DIMENSIONS IN INCHES UNLESS NOTED OTHERWISE

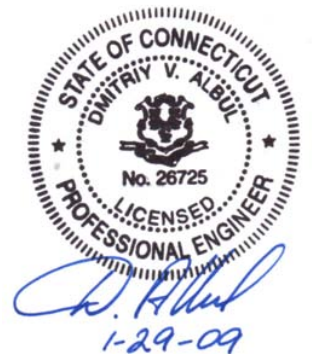
SHEET TITLE
BEAMS DETAIL 3

SHEET NUMBER
S-5

FILE NAME
08081



ENGINEER'S APPROVAL:



1 NORTH MAIN STREET
SUITE 312
CORTLAND, NY
PHONE: (607) 591-5381
FAX: (866) 870-0840

NO.	DATE	ISSUE DESCRIPTION	BY/CHK
1	01/09/09	INITIAL RELEASE	JJ JT

SITE INFO

SITE NY6072
243 TRESSER BLVD.
STAMFORD, CT 06901

SHEET SCALE / UNITS

NTS ALL DIMENSIONS IN INCHES
UNLESS NOTED OTHERWISE

SHEET TITLE

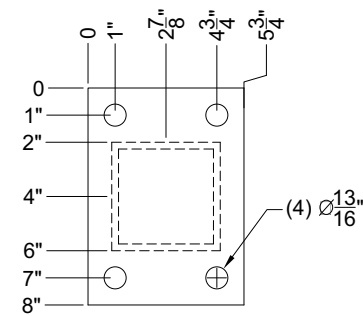
STUB COLUMN

SHEET NUMBER

S-6

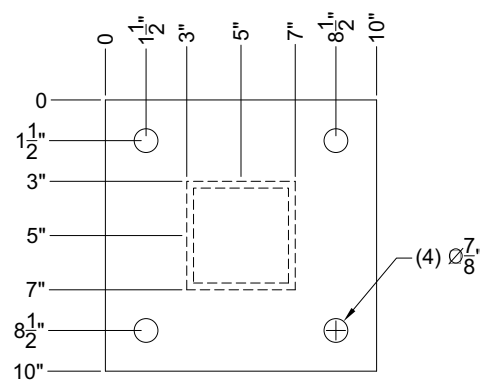
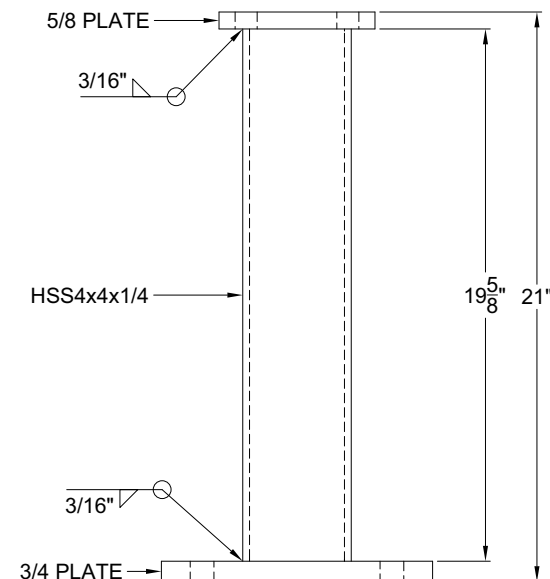
FILE NAME

08081



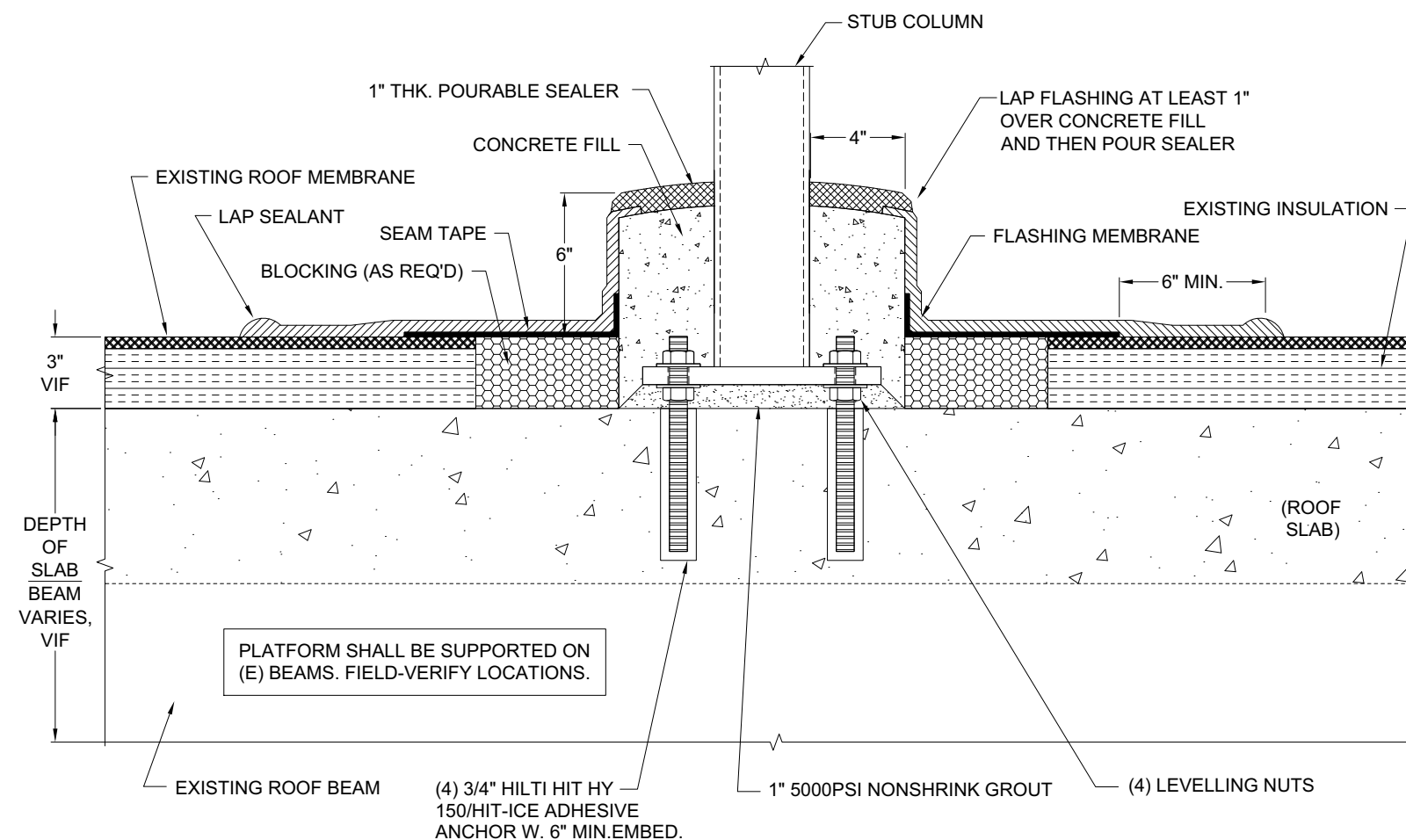
TOP FLANGE

OBSERVE ORIENTATION OF TOP FLANGES WITH RESPECT TO CONNECTED BEAMS. 1 PAIR FACES 1 WAY, THE OTHER, ANOTHER.



BOTTOM FLANGE

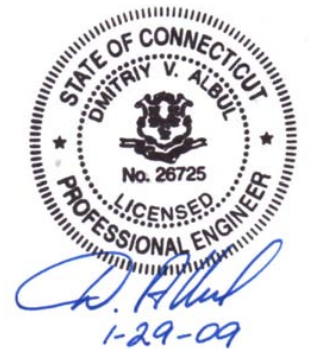
1 STUB COLUMN
S-6 (4 REQ'D)



2 ROOF PENETRATION
S-6 (@ 4 PLCS)

NOTE: THE ROOF PENETRATION DETAIL IS TO BE SPECIFIED BY THE BUILDING OWNER. THE ABOVE DETAIL IS SUGGESTED.

ENGINEER'S APPROVAL:



ARMOR TOWER

1 NORTH MAIN STREET
SUITE 312
CORTLAND, NY
PHONE: (607) 591-5381
FAX: (866) 870-0840

NO.	DATE	ISSUE DESCRIPTION	BY/CHK
1	01/09/09	INITIAL RELEASE	JJ/JT

SITE INFO

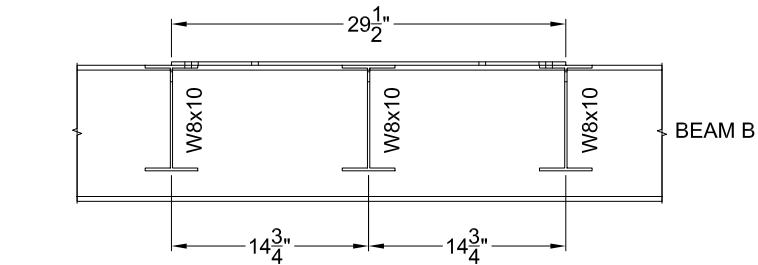
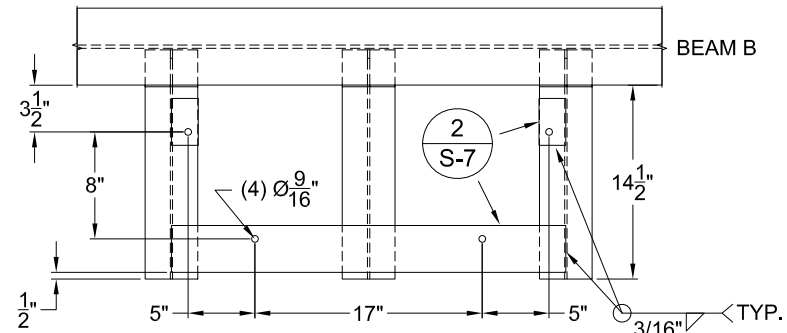
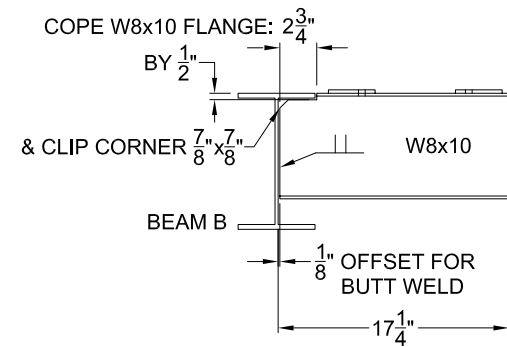
SITE NY6072
243 TRESSER BLVD.
STAMFORD, CT 06901

SHEET SCALE / UNITS
NTS ALL DIMENSIONS IN INCHES
UNLESS NOTED OTHERWISE

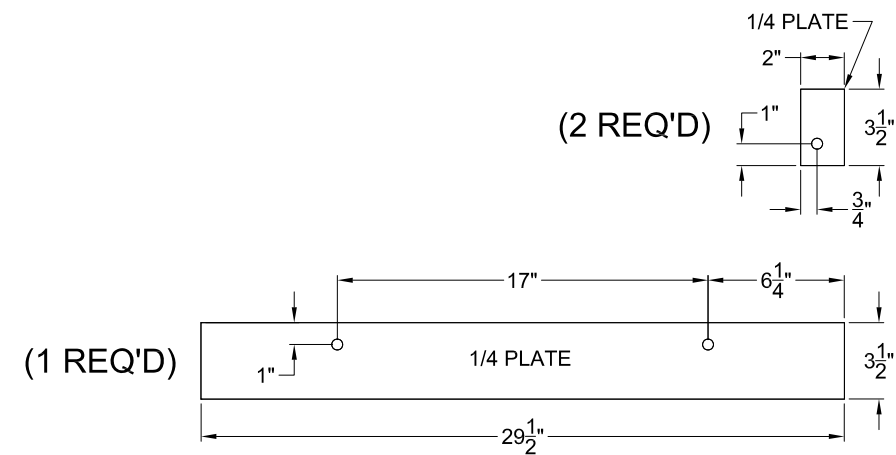
SHEET TITLE
PTC/GRATING SUPPORTS

SHEET NUMBER
S-7

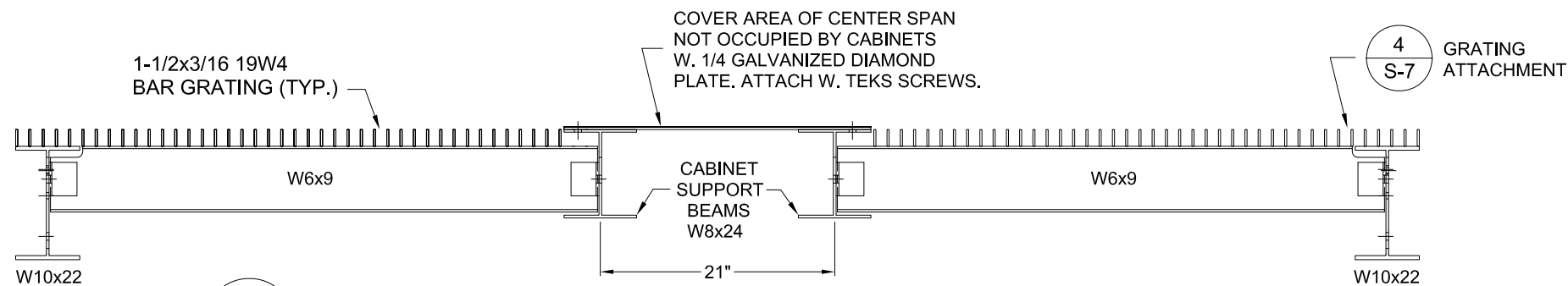
FILE NAME
08081



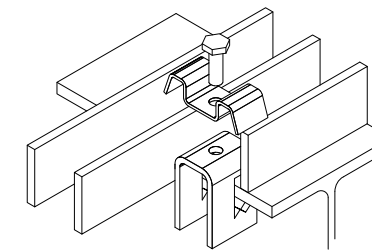
$\frac{1}{S-7}$ PTC SUPPORT



$\frac{2}{S-7}$ PTC BASEPLATES

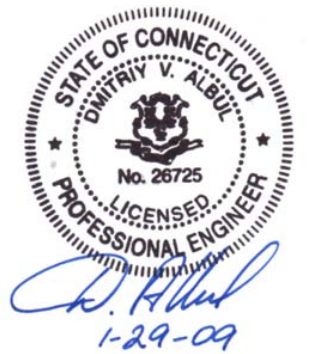


$\frac{3}{S-7}$ TYPICAL CROSS SECTION: GRATING AND DIAMOND PLATE SUPPORT



$\frac{4}{S-7}$ TYPICAL BAR GRATING ATTACHMENT CONNECTIONS TO BE NO FARTHER THAN 15" APART

ENGINEER'S APPROVAL:



ARMOR TOWER

1 NORTH MAIN STREET
SUITE 312
CORTLAND, NY
PHONE: (607) 591-5381
FAX: (866) 870-0840

1	01/09/09	INITIAL RELEASE	JJ JT
NO.	DATE	ISSUE DESCRIPTION	BY/CHK

SITE INFO

SITE NY6072
243 TRESSER BLVD.
STAMFORD, CT 06901

SHEET SCALE / UNITS

NTS ALL DIMENSIONS IN INCHES
UNLESS NOTED OTHERWISE

SHEET TITLE

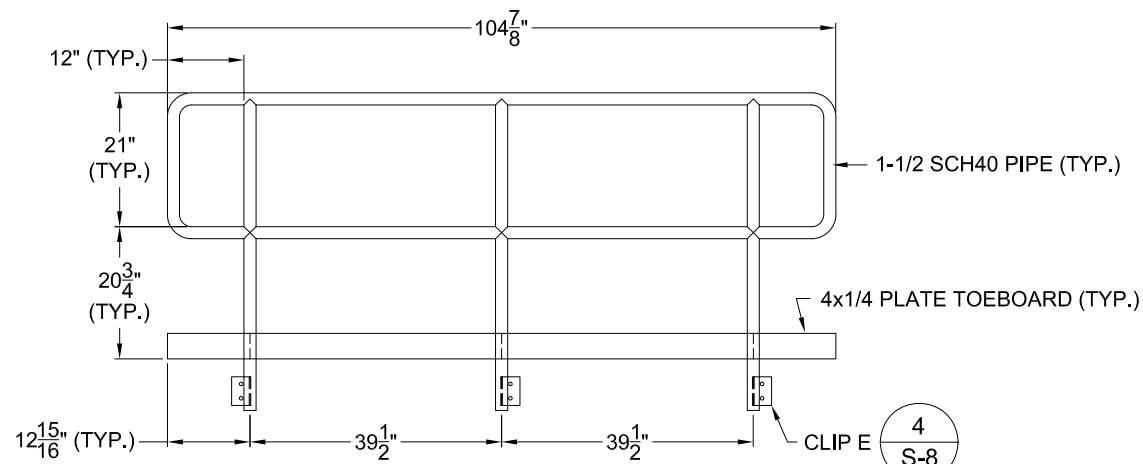
HANDRAILS/LADDER

SHEET NUMBER

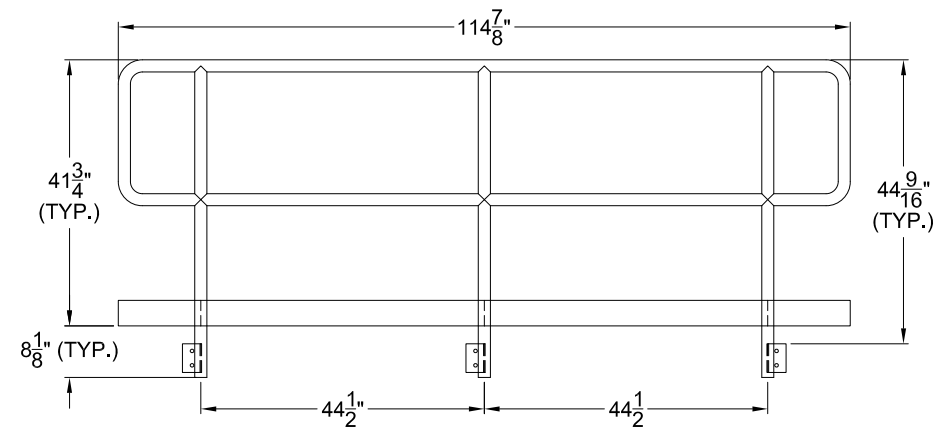
S-8

FILE NAME

08081

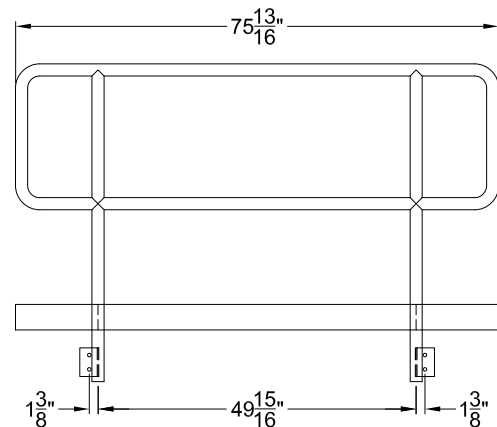


1
S-8
HANDRAIL A
(MAKE 2)

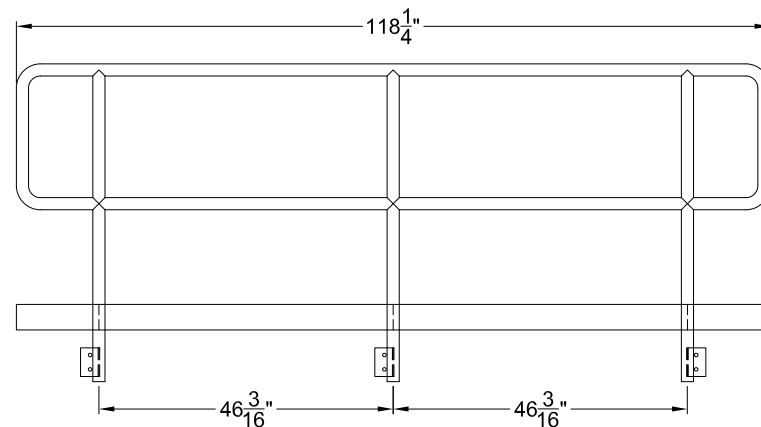


2
S-8
HANDRAIL B
(MAKE 2)

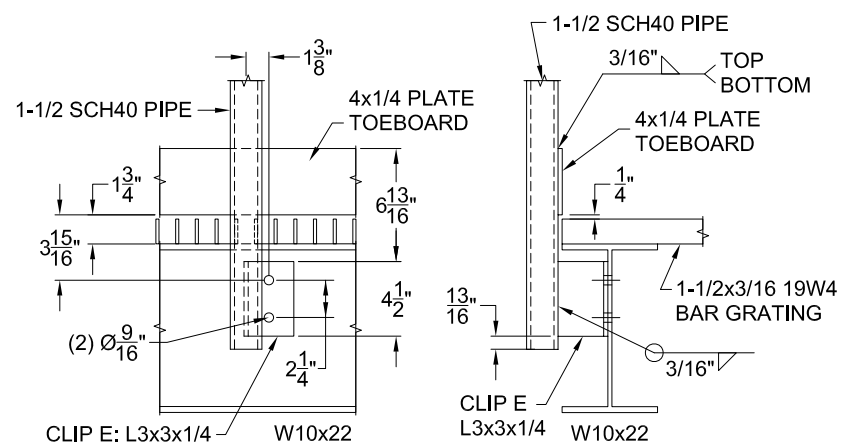
THE CENTER CLIP FACES
THE OPPOSITE WAY IN
THE OTHER HANDRAIL.



3
S-8
HANDRAIL C

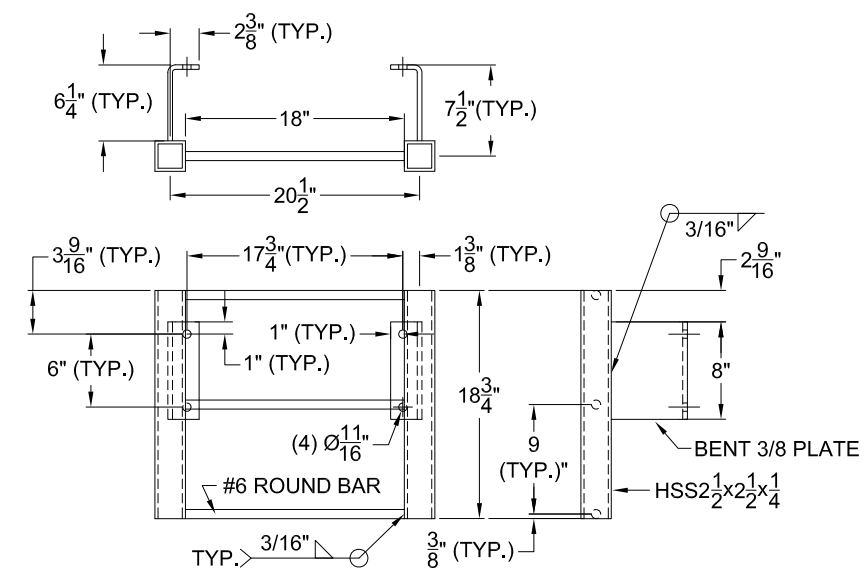


4
S-8
HANDRAIL D



TYPICAL FOR ALL HANDRAILS
BUT, ALWAYS REFERENCE
ORIENTATION OF CLIP E!

5
S-8
CLIP E: HANDRAIL CONNECTION
G.A. @ SECTION



6
S-8
LADDER ASSEMBLY

ENGINEER'S APPROVAL:



ARMOR TOWER

1 NORTH MAIN STREET
SUITE 312
CORTLAND, NY
PHONE: (607) 591-5381
FAX: (866) 870-0840

NO.	DATE	ISSUE DESCRIPTION	BY/CHK
1	01/09/09	INITIAL RELEASE	JJ/JT

SITE INFO

SITE NY6072
243 TRESSER BLVD.
STAMFORD, CT 06901

SHEET SCALE / UNITS

NTS ALL DIMENSIONS IN INCHES
UNLESS NOTED OTHERWISE

SHEET TITLE

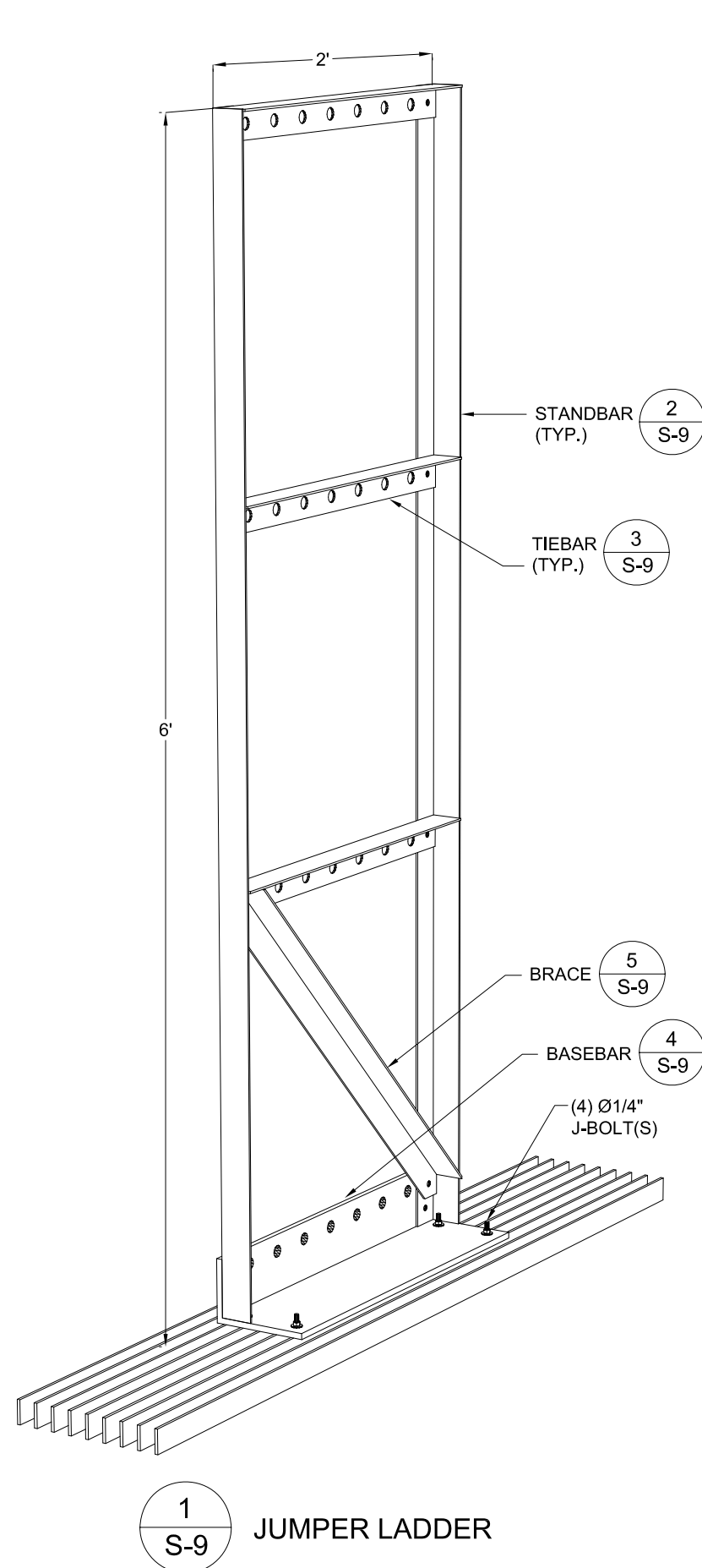
JUMPER LADDER

SHEET NUMBER

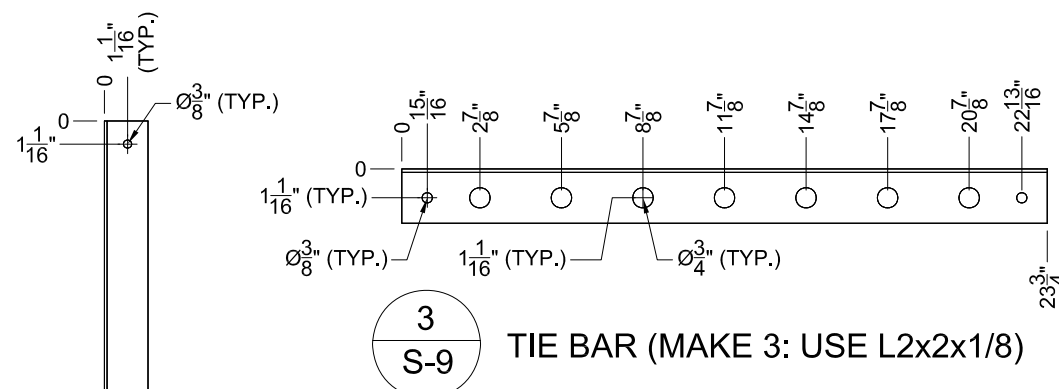
S-9

FILE NAME

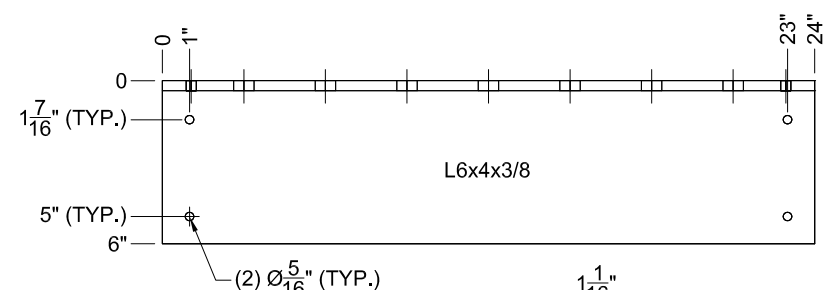
08081



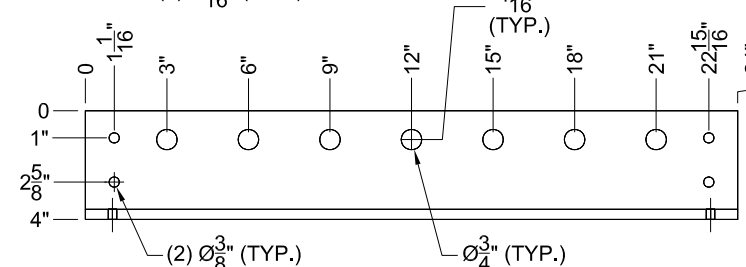
1
S-9 JUMPER LADDER



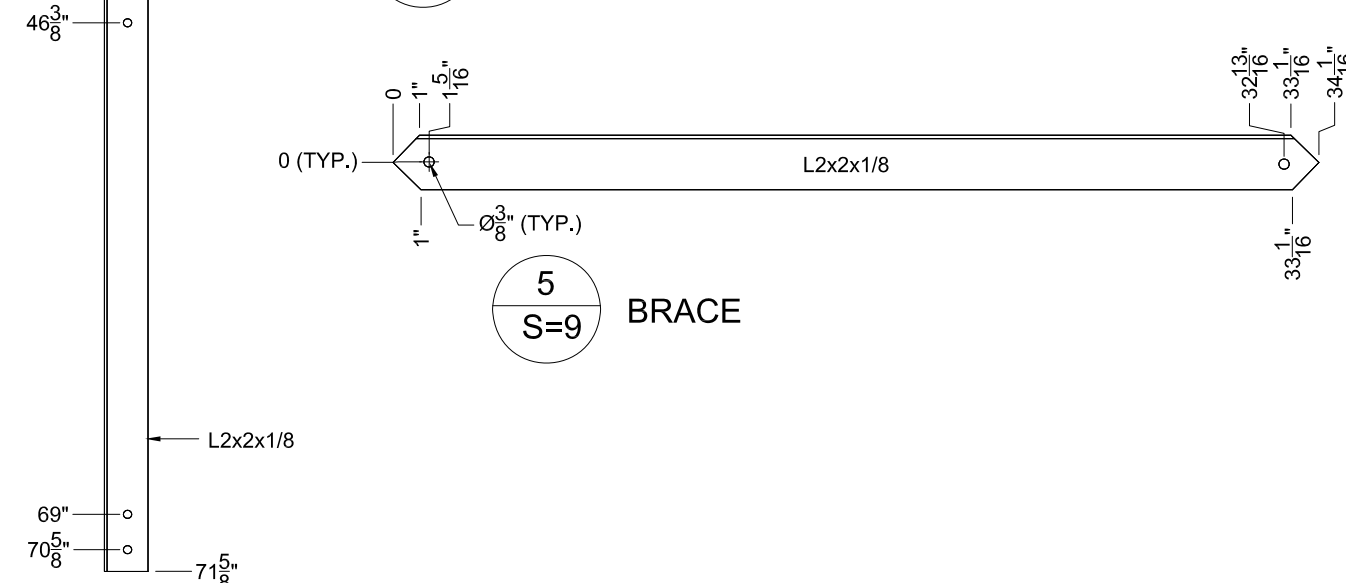
3
S-9 TIE BAR (MAKE 3: USE L2x2x1/8)



4
S-9 BASE BAR



5
S=9 BRACE



2
S-9 STAND BAR (1 AS DETAILED, 1 OPPOSITE)

ENGINEER'S APPROVAL:



ARMOR TOWER

1 NORTH MAIN STREET
SUITE 312
CORTLAND, NY
PHONE: (607) 591-5381
FAX: (866) 870-0840

NO.	DATE	ISSUE DESCRIPTION	BY/CHK
1	01/09/09	INITIAL RELEASE	JJ/JT

SITE INFO

SITE NY6072
243 TRESSER BLVD.
STAMFORD, CT 06901

SHEET SCALE / UNITS

NTS ALL DIMENSIONS IN INCHES
UNLESS NOTED OTHERWISE

SHEET TITLE

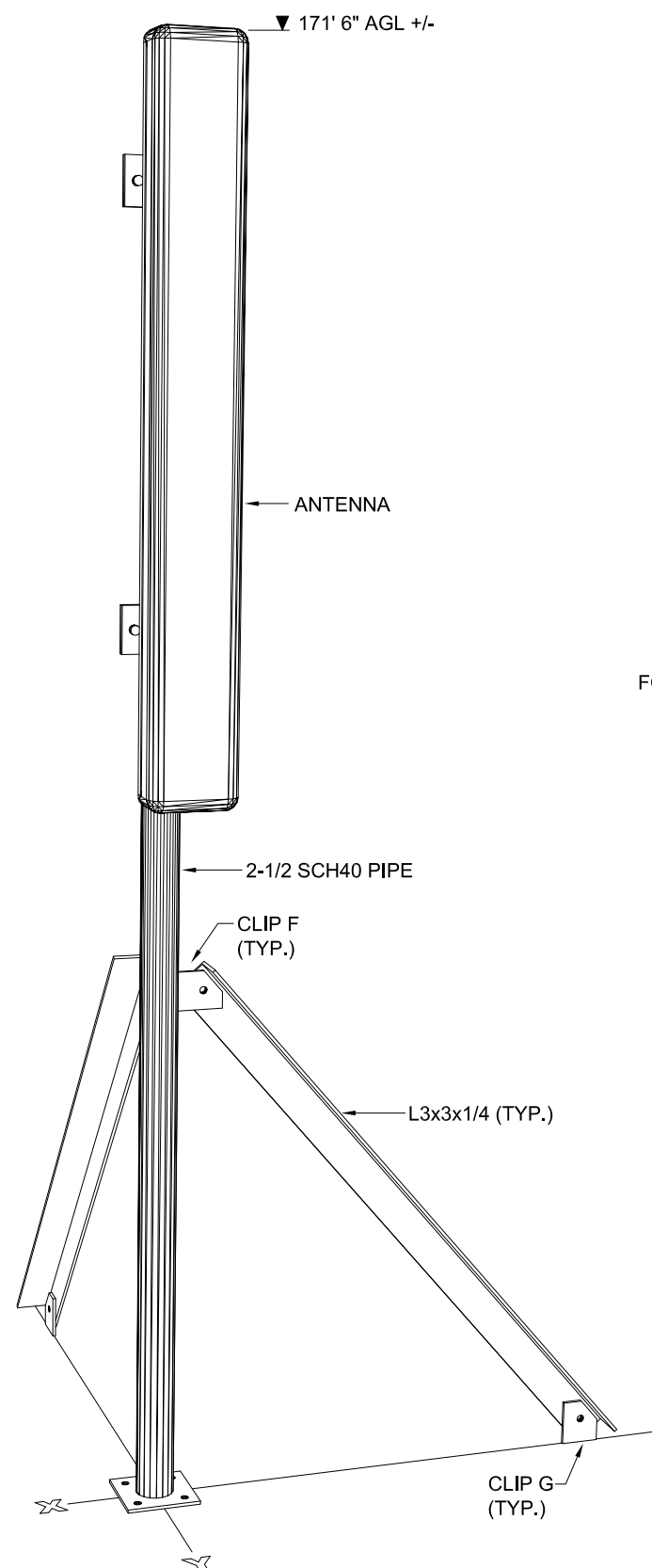
ANTENNA MOUNT

SHEET NUMBER

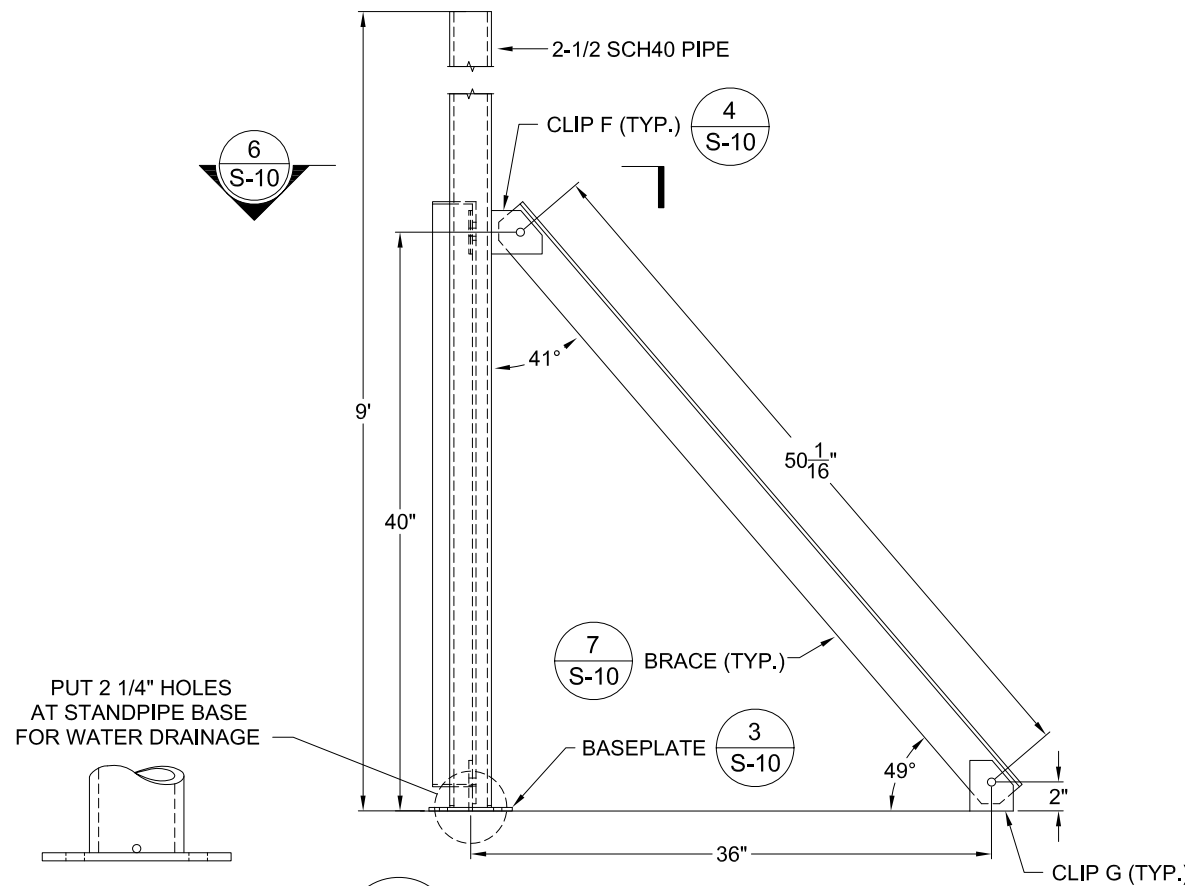
S-10

FILE NAME

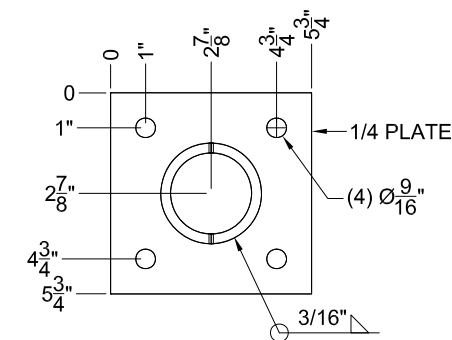
08081



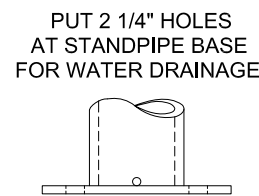
1
S-10 SECTOR 1 ANTENNA MOUNT
(2 REQ'D)



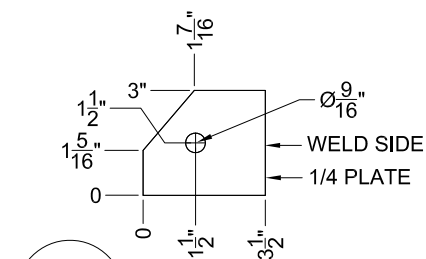
2
S-10 G.A. ANTENNA MOUNT
(2 REQ'D)



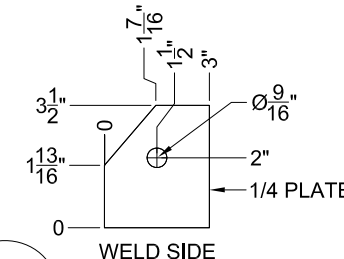
3
S-10 BASEPLATE
(MAKE 2)



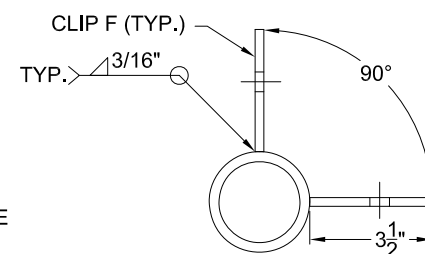
PUT 2 1/4\"/>



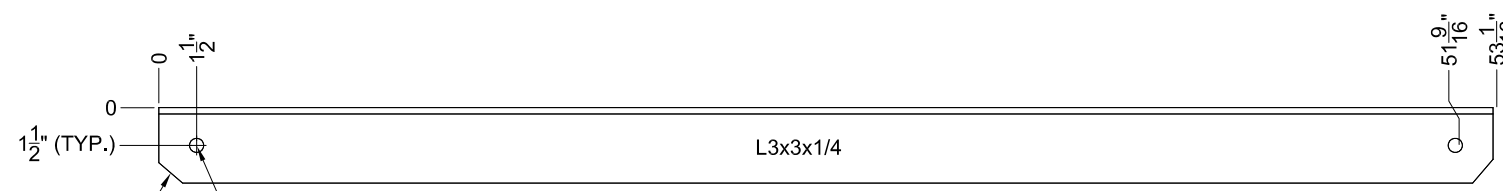
4
S-10 CLIP F (MAKE 4)



5
S-10 CLIP G (MAKE 4)



6
S-10 STANDPIPE CLIPS

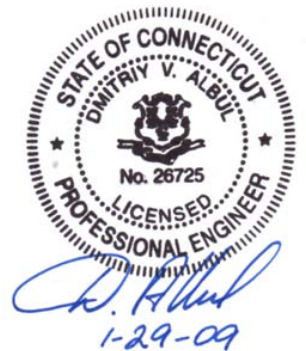


7
S-10 BRACE (MAKE 4)

PREPARED FOR:

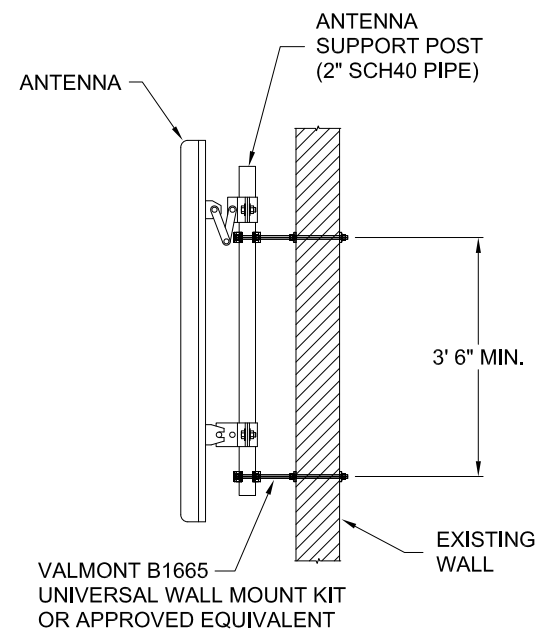


ENGINEER'S APPROVAL:



1 NORTH MAIN STREET
 SUITE 312
 CORTLAND, NY
 PHONE: (607) 591-5381
 FAX: (866) 870-0840

TOP OF ANTENNA ELEVATIONS:
 SECTOR 2: 203' 7" AGL +/-
 SECTOR 3: 203' 7" AGL +/-
 SECTOR 4: 192' 5" AGL +/-



1
S-11 SECTORS 2, 3 & 4 ANTENNA MOUNTS

NO.	DATE	ISSUE DESCRIPTION	BY/CHK
1	01/09/09	INITIAL RELEASE	JJ JT

SITE INFO
 SITE NY6072
 243 TRESSER BLVD.
 STAMFORD, CT 06901

SHEET SCALE / UNITS
 NTS ALL DIMENSIONS IN INCHES
 UNLESS NOTED OTHERWISE

SHEET TITLE
ANTENNA MOUNTS 2

SHEET NUMBER
S-11

FILE NAME
08081